

Virginia

Alexandria - Type 225

1917 11¢	1917 30¢	1917 50¢
-------------	-------------	-------------

Alexandria - Type 482

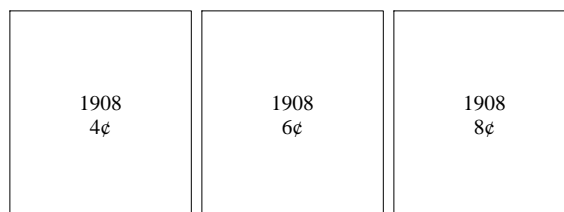
1917 50¢

Bedford City - Type L-1 HS

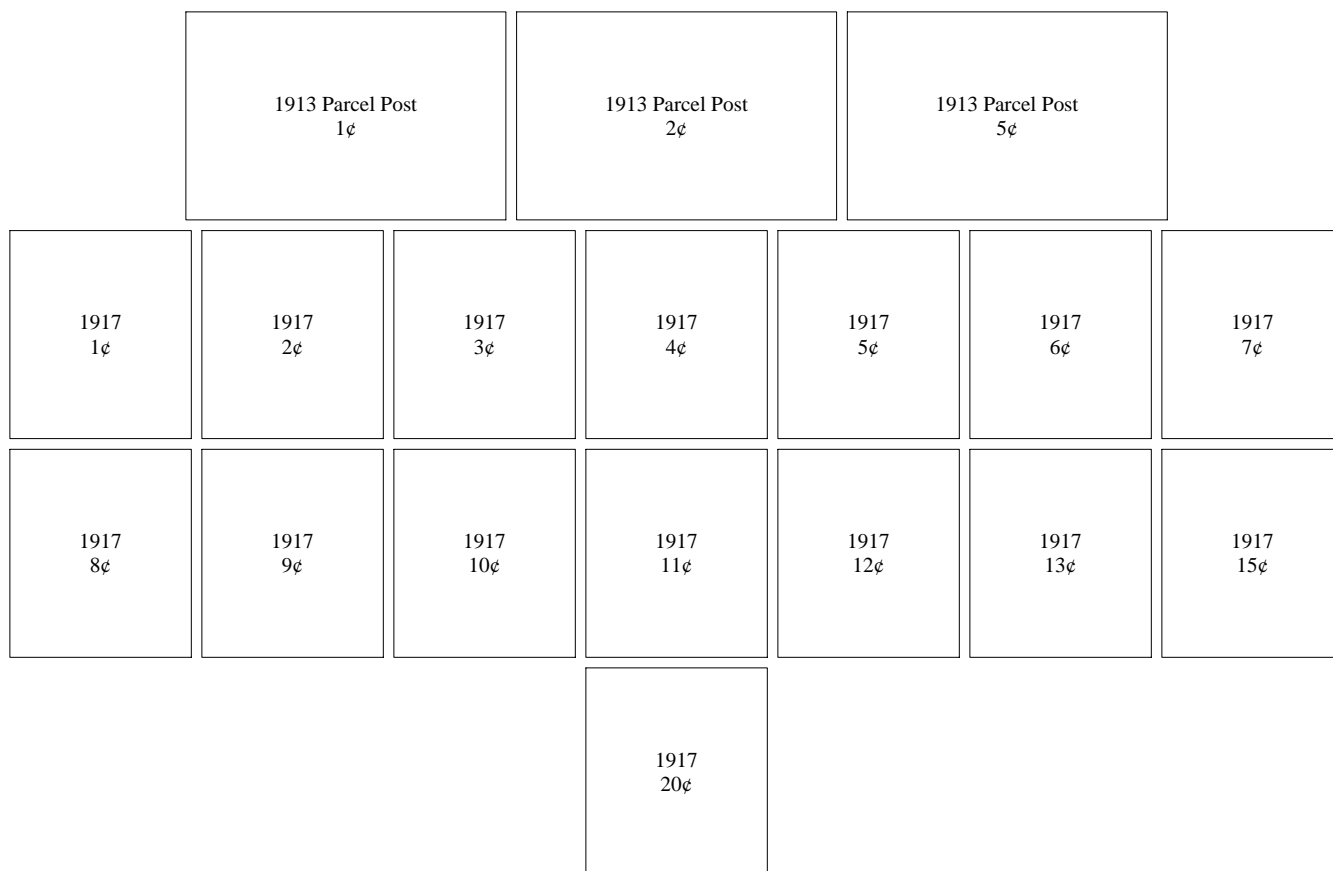
1908 5¢	1908 6¢	1908 8¢	1908 10¢
------------	------------	------------	-------------

Virginia

Bedford City - Type L-2 HS

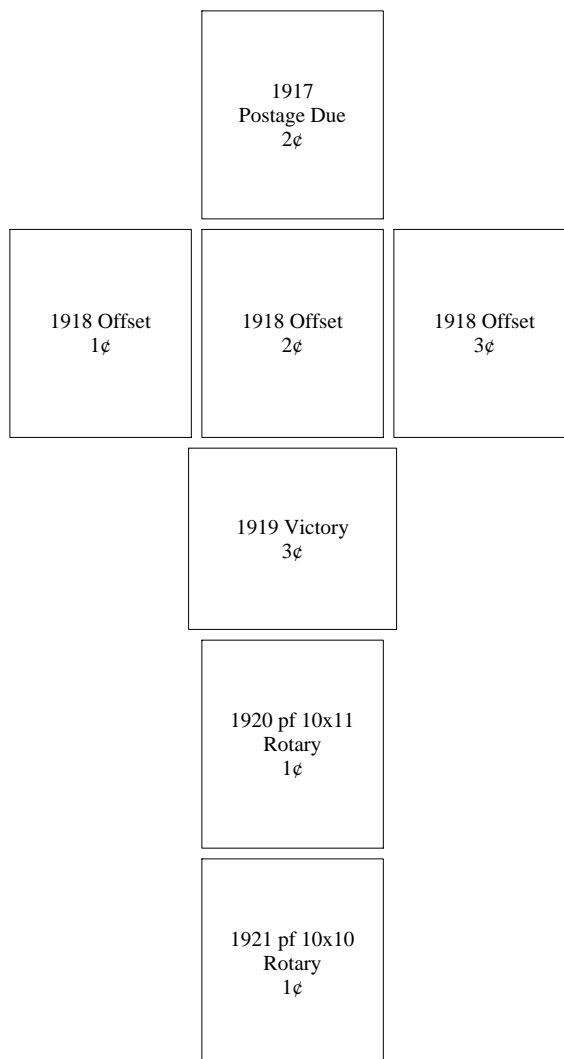


Blackstone - Type 413



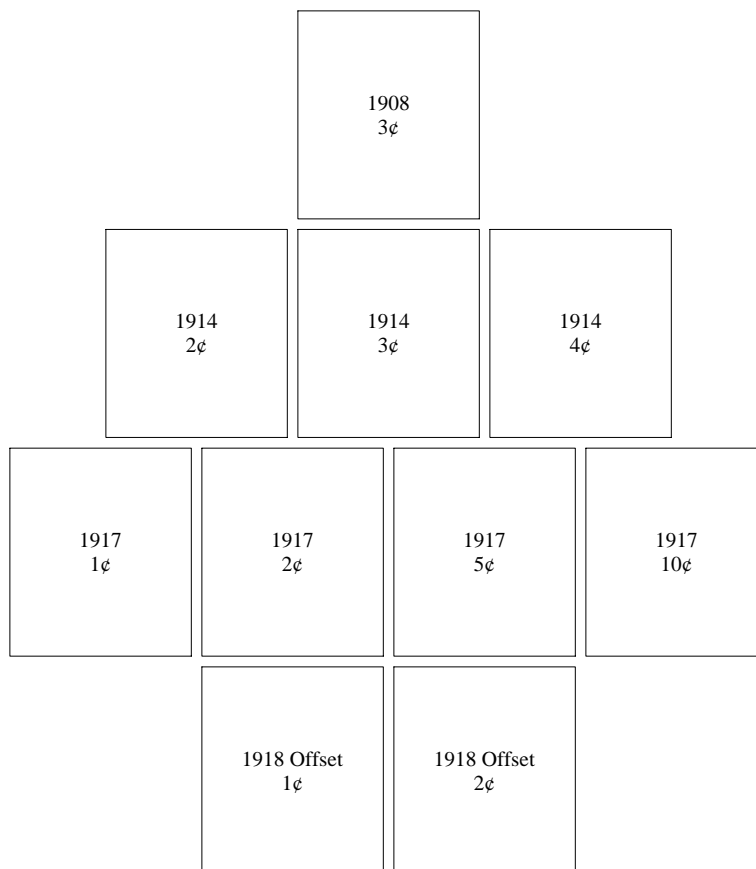
Virginia

Blackstone - Type 413

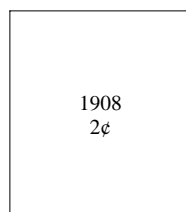


Virginia

Blackstone - Type 414



Bristol - Type 402



Virginia

Bristol - Type 402

1912
15¢

1913 Parcel Post
25¢

1914
10¢

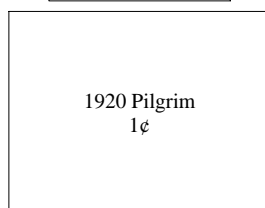
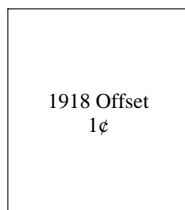
Bristol - Type 563

1909 Lincoln
2¢

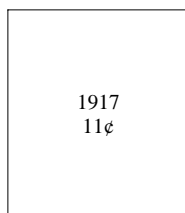
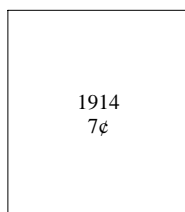
1913 Panama Pacific
2¢

Virginia

Bristol - Type 563



Bristol - Type L-1 HS



Virginia

Bristol - Type L-2 HS

1917 Postage Due 2¢	1917 Postage Due 5¢
---------------------------	---------------------------

Cape Charles - Type 575

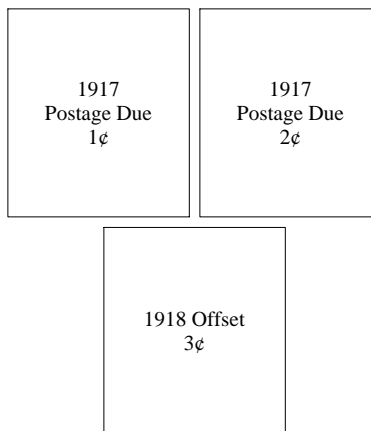
1918 Offset 3¢

Cape Charles - Type 577

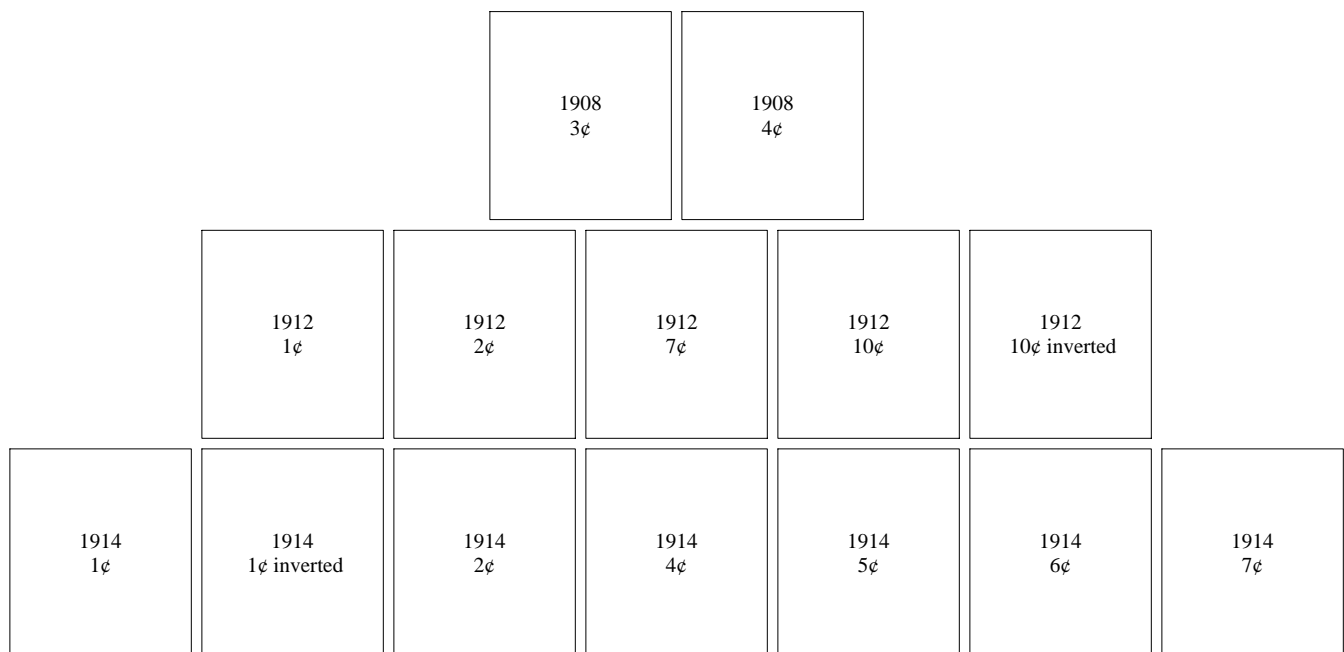
1917 13¢	1917 15¢
-------------	-------------

Virginia

Cape Charles - Type 577

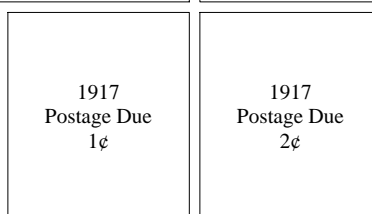
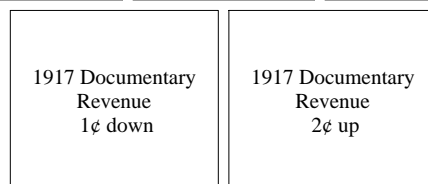
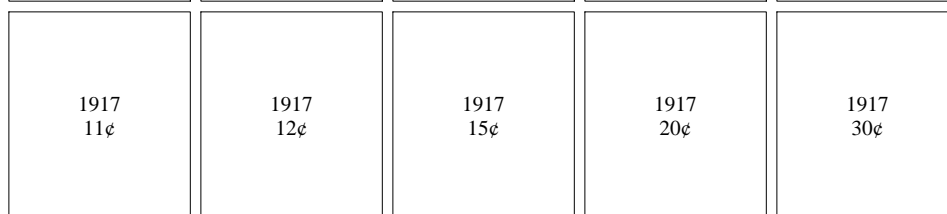
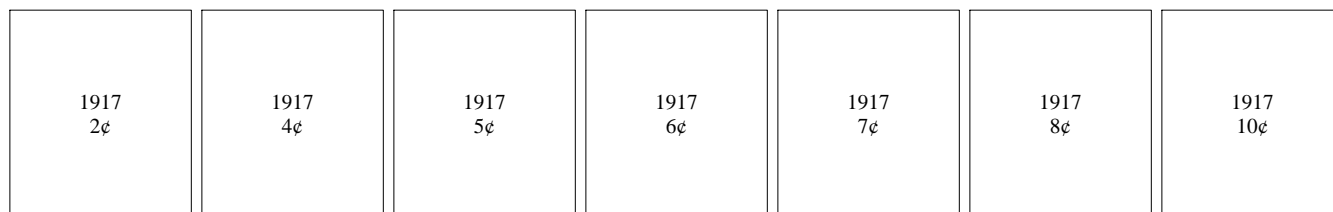
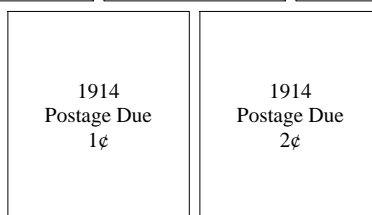
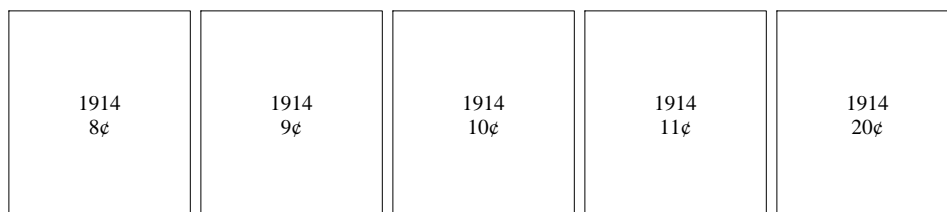


Charlottesville - Type 204.5



Virginia

Charlottesville - Type 204.5



Virginia

Charlottesville - Type 204.5

1918 Offset
3¢

1921 pf 10x10
Rotary
1¢

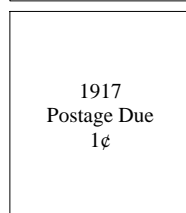
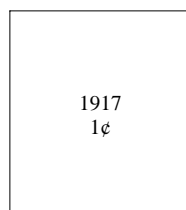
Chatham - Type 549

1917
Postage Due
 $\frac{1}{2}$ ¢

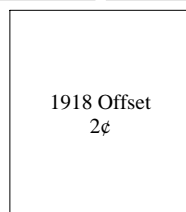
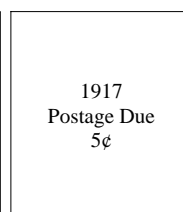
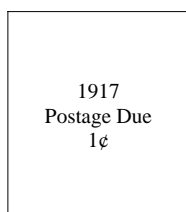
1917
Postage Due
2¢

Virginia

Chilhowie - Type 513

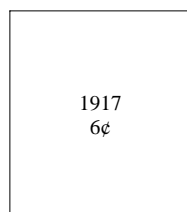


Cismont - Type 729

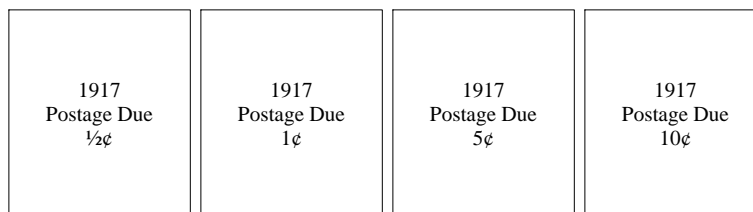


Virginia

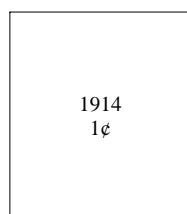
Covington - Type 482



Danville - Type 232

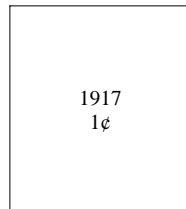


Dayton - Type 405

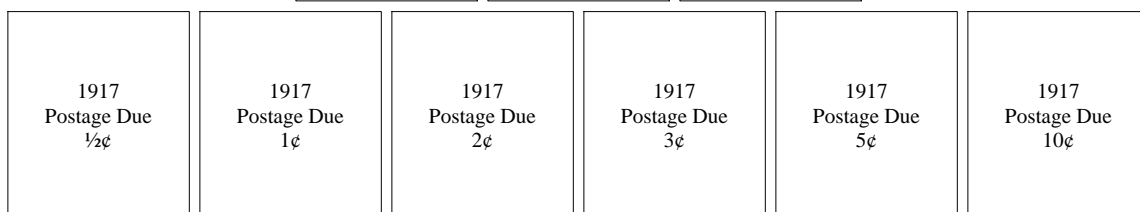
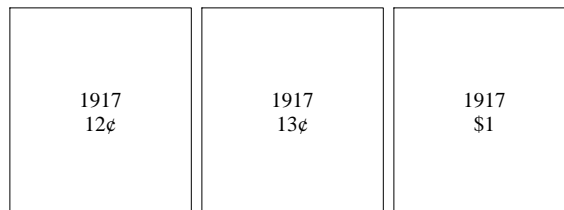


Virginia

Dayton - Type 405

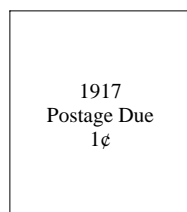


Fredericksburg - Type 473

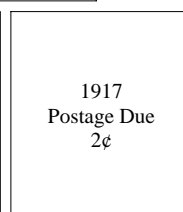
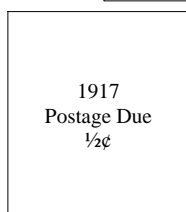
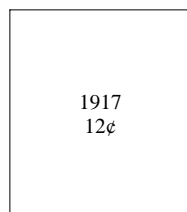


Virginia

Fredericksburg - Type 705



Galax - Type 455



Virginia

Hampton Institute Branch - Type L-1 HS

1911
Postage Due
1¢

Harrisonburg - Type 504

1917
2¢

1917
3¢

1917
6¢

1917
7¢

1917
8¢

1917
12¢

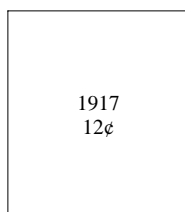
1917
50¢

1917
\$1

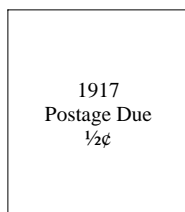
1921 pf 10x10
Rotary
1¢

Virginia

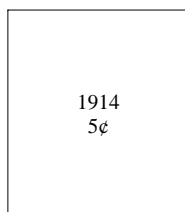
Hopewell - Type 466



Lexington - Type 573



Lexington - Type L-1 HS



Virginia

Lexington - Type L-1 HS

1916 Coil Perf
10 Vert
1¢

1917
5¢

1917
Postage Due
1¢

1917
Postage Due
2¢

Luray - Type 729

1908
1¢

Virginia

Lynchburg - Type 205

							<div>1908 4¢</div>	<div>1908 4¢ inverted</div>	<div>1908 6¢</div>			
					<div>1912 2¢</div>	<div>1912 8¢</div>	<div>1912 9¢</div>	<div>1912 10¢</div>	<div>1912 15¢</div>			
<div>1914 1¢</div>	<div>1914 1¢ inverted</div>	<div>1914 2¢</div>	<div>1914 2¢ inverted</div>	<div>1914 2¢ double</div>	<div>1914 3¢</div>	<div>1914 3¢ inverted</div>						
<div>1914 4¢</div>	<div>1914 4¢ inverted</div>	<div>1914 5¢</div>	<div>1914 5¢ inverted</div>	<div>1914 6¢</div>	<div>1914 6¢ inverted</div>	<div>1914 7¢</div>						
<div>1914 8¢</div>	<div>1914 8¢ inverted</div>	<div>1914 9¢</div>	<div>1914 10¢</div>	<div>1914 12¢</div>	<div>1914 20¢</div>	<div>1914 20¢ inverted</div>						
							<div>1914 20¢ double</div>					

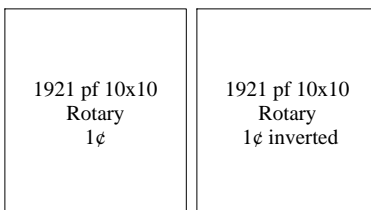
Virginia

Lynchburg - Type 205

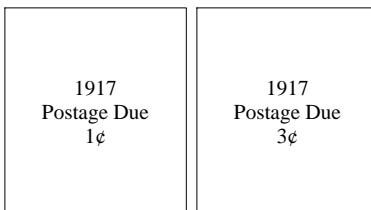
1917 1¢	1917 1¢ inverted	1917 2¢	1917 2¢ inverted	1917 3¢	1917 3¢ inverted	1917 4¢
1917 4¢ inverted	1917 5¢	1917 5¢ inverted	1917 6¢	1917 6¢ inverted	1917 6¢ double	1917 6¢ double invert
1917 7¢	1917 7¢ inverted	1917 8¢	1917 8¢ inverted	1917 9¢	1917 9¢ inverted	1917 10¢
1917 10¢ inverted	1917 11¢	1917 11¢ inverted	1917 12¢	1917 12¢ inverted	1917 15¢	1917 15¢ inverted
		1917 20¢	1917 20¢ inverted	1917 50¢	1917 50¢ inverted	
1918 Offset 1¢	1918 Offset 2¢	1918 Offset 2¢ inverted	1918 Offset 3¢	1918 Offset 3¢ inverted	1918 Offset 3¢ double	

Virginia

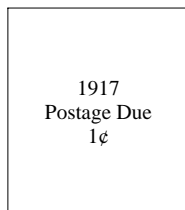
Lynchburg - Type 205



Madison Heights - Type 483

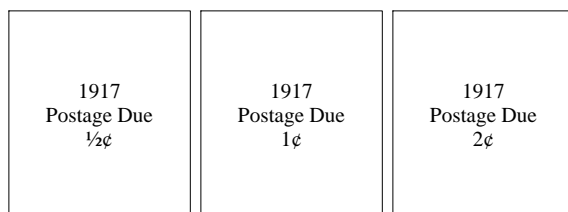


Marion - Type 560

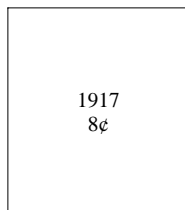


Virginia

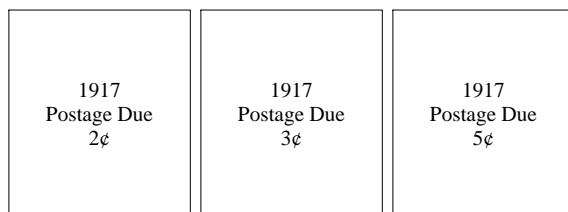
Martinsville - Type 471



Mount Crawford - Type 539



Newport News - Type 473



Virginia

Norfolk - Type 203

	1908 3¢	1908 4¢	1908 5¢	1908 6¢	1908 8¢	
	1912 1¢	1912 2¢	1912 7¢	1912 9¢	1912 10¢	
1914 1¢	1914 1¢ inverted	1914 2¢	1914 2¢ inverted	1914 3¢	1914 3¢ inverted	1914 4¢
1914 5¢	1914 6¢	1914 7¢	1914 8¢	1914 9¢	1914 10¢	1914 10¢ inverted
			1914 15¢			
1917 1¢	1917 1¢ inverted	1917 2¢	1917 3¢	1917 4¢	1917 4¢ double	1917 4¢ double (NI)

Virginia

Norfolk - Type 203

1917 4¢ triple (NNI)	1917 5¢	1917 6¢	1917 7¢	1917 8¢	1917 9¢	1917 10¢
	1917 11¢	1917 12¢	1917 15¢	1917 20¢	1917 30¢	
		1918 Offset 1¢	1918 Offset 2¢	1918 Offset 3¢		
			1921 pf 10x10 Rotary 1¢			

Norfolk - Type 232

1917 Postage Due 1¢	1917 Postage Due 2¢
---------------------------	---------------------------

Virginia

Orange - Type 479

1912-17 Imperf
2¢

1913 Parcel Post
2¢

1916 Coil Perf
10 Horiz
2¢

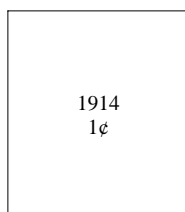
1920 Pilgrim
2¢

Petersburg - Type 205

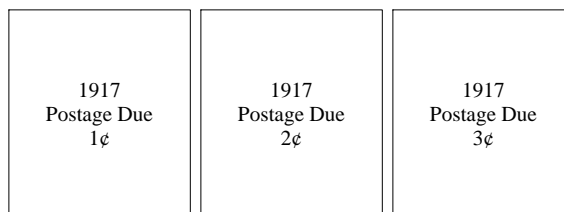
1912
1¢

Virginia

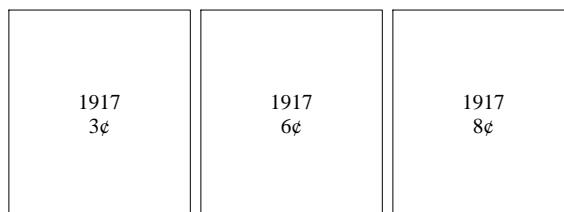
Petersburg - Type 205



Petersburg - Type 471

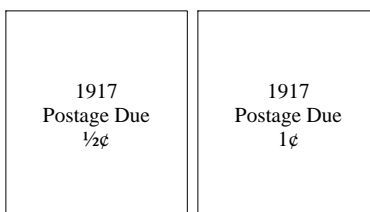


Petersburg - Type 505

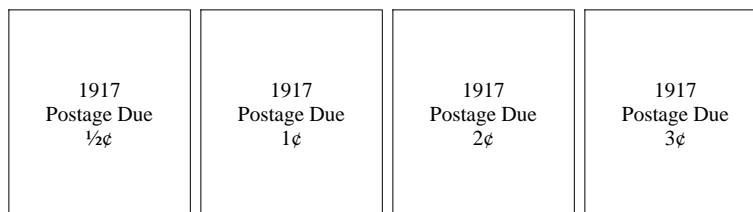


Virginia

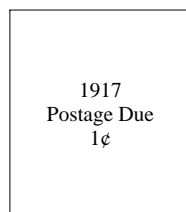
Petersburg - Type 577



Petersburg - Type 605



Petersburg - Type 704



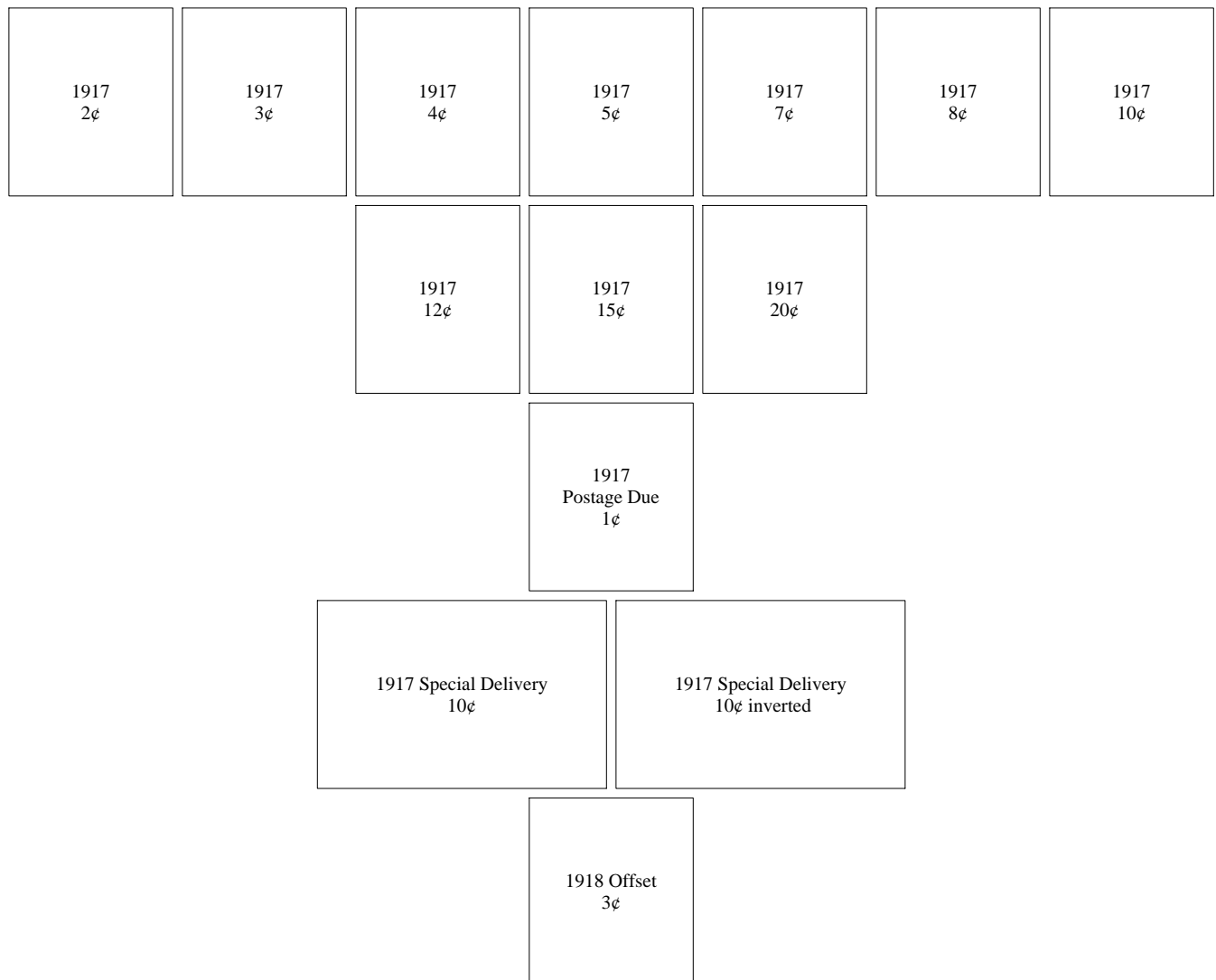
Virginia

Portsmouth - Type 205

1908 4¢				1908 4¢ inverted				1908 6¢				1908 6¢ inverted			
1912 1¢		1912 2¢		1912 7¢		1912 8¢		1912 9¢		1912 9¢ inverted		1912 12¢			
1913 Parcel Post 5¢				1913 Parcel Post 15¢				1913 Parcel Post 25¢				1913 Parcel Post 25¢ inverted			
1914 1¢		1914 2¢		1914 3¢		1914 4¢		1914 4¢ inverted		1914 5¢		1914 5¢ inverted			
1914 6¢		1914 7¢		1914 8¢		1914 10¢		1914 10¢ inverted		1914 12¢					
1916 Special Delivery 10¢															

Virginia

Portsmouth - Type 205



Virginia

Pulaski - Type 548

1917 Postage Due 1¢	1917 Postage Due 2¢
---------------------------	---------------------------

Reedville - Type L-1 HS

1914 1¢	1914 2¢	1914 5¢	1914 8¢	1914 10¢
------------	------------	------------	------------	-------------

Richmond - Type 162

1916 Coil Perf 10 Vert 1¢ down	1916 Coil Perf 10 Vert 3¢ up	1916 Coil Perf 10 Vert 3¢ down	1916 Coil Perf 10 Vert 3¢ double (UD)	1916 Coil Perf 10 Vert 4¢ down	1916 Coil Perf 10 Vert 5¢ up	1916 Coil Perf 10 Vert 5¢ down
--------------------------------------	------------------------------------	--------------------------------------	---	--------------------------------------	------------------------------------	--------------------------------------

Virginia

Richmond - Type 162

1916 Coil Perf
10 Vert
10¢ down

Richmond - Type 410

1914
2¢

1914
3¢

1914
4¢

1914
5¢

1914
6¢

1914
7¢

1914
8¢

1914
9¢

1914
10¢

1914
11¢

1914
12¢

1914
15¢

1914
20¢

1914
30¢

1917
5¢

1917
6¢

1917
12¢

1917
15¢

1917
20¢

1917
30¢

1917
50¢

1918 Offset
1¢

Virginia

Richmond - Type 456

1912 1¢						
1913 Parcel Post Postage Due 5¢		1913 Parcel Post Postage Due 10¢		1913 Parcel Post Postage Due 25¢		
1917 1¢	1917 1¢ booklet single	1917 2¢	1917 2¢ booklet single	1917 4¢	1917 5¢	1917 6¢
1917 8¢	1917 9¢	1917 11¢	1917 12¢	1917 13¢	1917 15¢	1917 20¢
1917 50¢			1917 \$1			
1917 Postage Due ½¢	1917 Postage Due 1¢	1917 Postage Due 2¢	1917 Postage Due 3¢	1917 Postage Due 5¢	1917 Postage Due 10¢	

Virginia

Richmond - Type 456

1918 Offset
3¢

1920 Pilgrim
1¢

1921 pf 10x10
Rotary
1¢

Richmond - Type 549

1912
1¢

1913 Parcel Post
25¢

Virginia

Richmond - Type 549

1913 Parcel Post Postage Due
5¢

1914
1¢

1914
2¢

1914
4¢

1914
5¢

1916 Coil Perf
10 Vert
1¢

1916 Coil Perf
10 Vert
2¢

1916 Coil Perf
10 Vert
3¢

1916 Coil Perf
10 Vert
5¢

1916 Special Delivery
10¢

1917
1¢

1917
2¢

1917
2¢ booklet single

1917
3¢

1917
3¢ booklet single

1917
4¢

1917
5¢

1917
6¢

1917
7¢

1917
8¢

1917
9¢

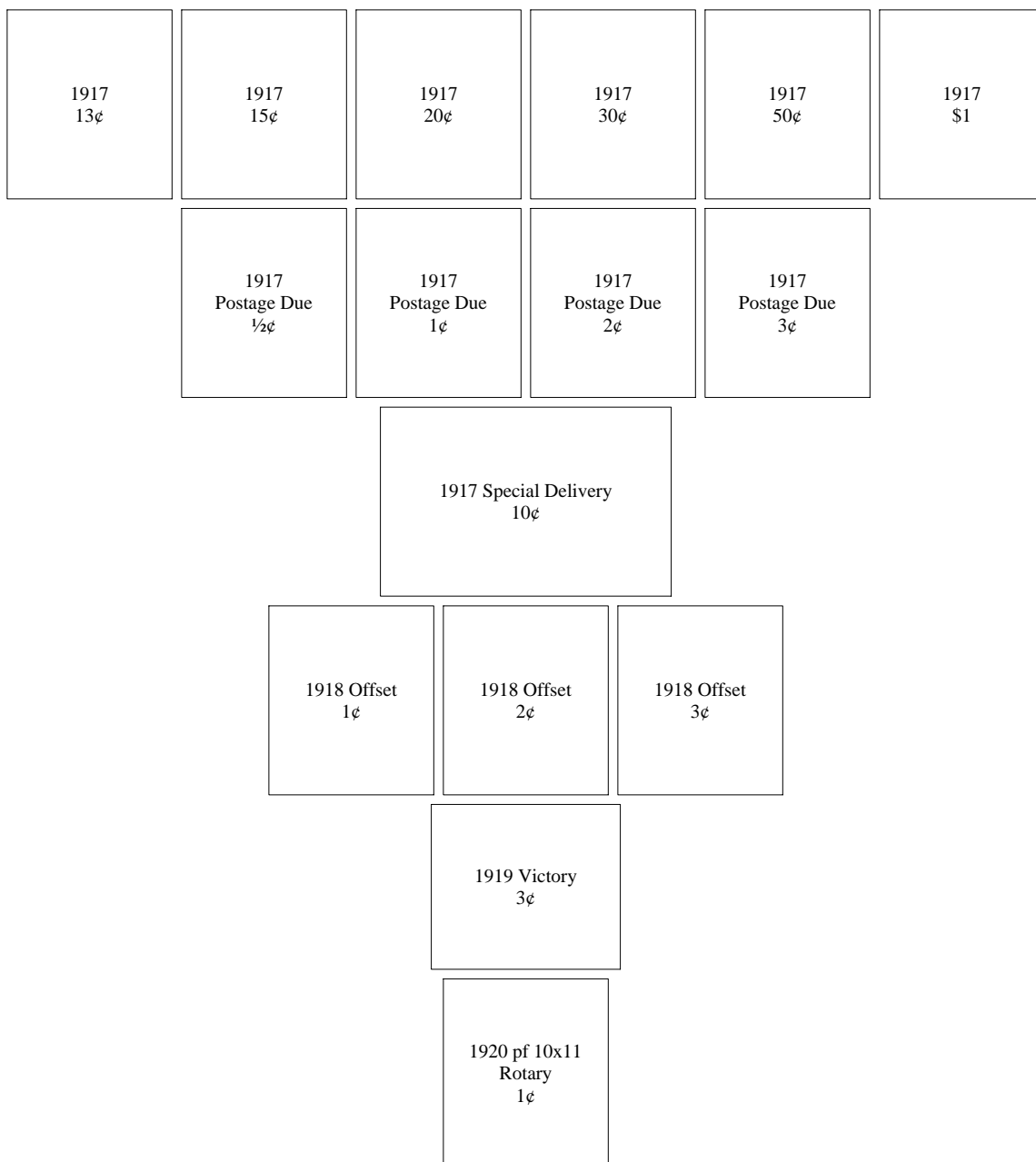
1917
10¢

1917
11¢

1917
12¢

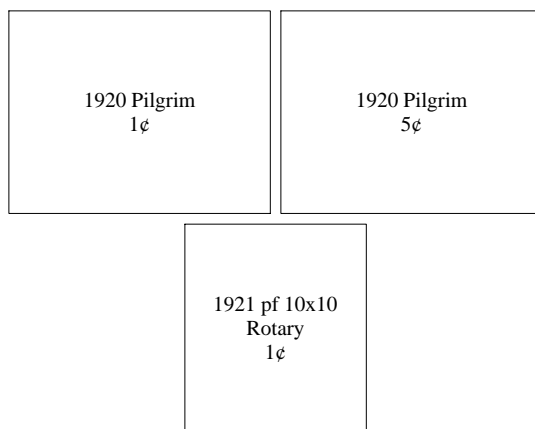
Virginia

Richmond - Type 549

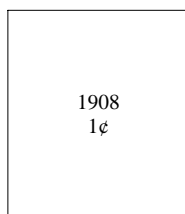


Virginia

Richmond - Type 549



Richmond - Type L-1 TS



Virginia

Richmond - Type L-2 E

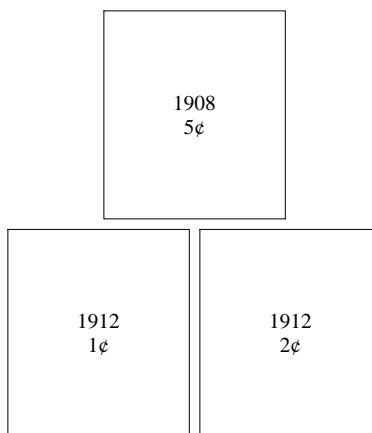
1908 4¢	1908 5¢	1908 6¢
1912 1¢	1912 2¢	1912 8¢

Richmond - Type L-3 E

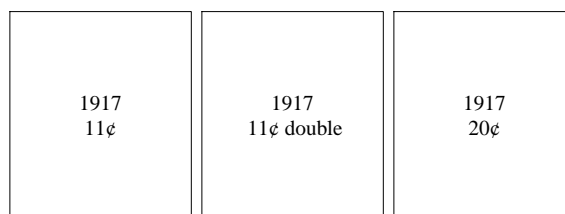
1908 5¢	
1912 1¢	1912 2¢

Virginia

Richmond - Type L-4 TS



Richmond - Type L-5 M



Virginia

Richmond - Type L-8 E

1908
4¢ inverted

1912
1¢

1912
1¢ inverted

1912
2¢

1912
2¢ inverted

1914
1¢

1914
1¢ inverted

1914
1¢ blue ink

1914
2¢

1914
2¢ inverted

1914
3¢

1914
3¢ inverted

1914
4¢

1914
4¢ inverted

1914
4¢ blue ink

1914
5¢

1914
5¢ inverted

1914
5¢ blue ink

1914
6¢

1914
6¢ inverted

1914
7¢

1914
7¢ inverted

1914
7¢ blue ink

1914
8¢

1914
8¢ inverted

1914
8¢ blue ink

1914
9¢

1914
10¢

1914
10¢ inverted

Virginia

Richmond - Type L-8 E

1917 1¢	1917 1¢ inverted	1917 1¢ double	1917 1¢ double (NI)	1917 2¢	1917 2¢ inverted	1917 2¢ double invert
1917 3¢	1917 3¢ inverted	1917 4¢	1917 4¢ inverted	1917 4¢ double	1917 5¢	1917 5¢ inverted
1917 6¢	1917 6¢ inverted	1917 7¢	1917 7¢ inverted	1917 7¢ double	1917 7¢ double (NI)	1917 8¢
1917 8¢ inverted	1917 9¢	1917 10¢	1917 10¢ inverted	1917 11¢	1917 11¢ double	1917 12¢
1917 12¢ double	1917 13¢	1917 13¢ inverted	1917 15¢	1917 15¢ inverted	1917 20¢	1917 30¢
		1917 30¢ inverted	1917 30¢ double	1917 30¢ double (NI)	1917 50¢	

Virginia

Richmond - Type L-8 E

1918 Offset
1¢

1918 Offset
1¢ inverted

1918 Offset
2¢

1918 Offset
3¢

1918 Offset
3¢ inverted

1918 Offset
3¢ double

1918 Offset
3¢ double (NI)

1918 Offset
3¢ Scott 530a double impression

1920 pf 10x11
Rotary
1¢

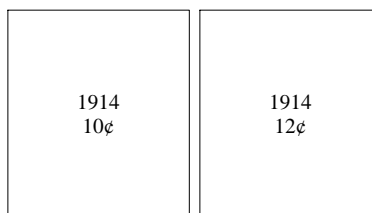
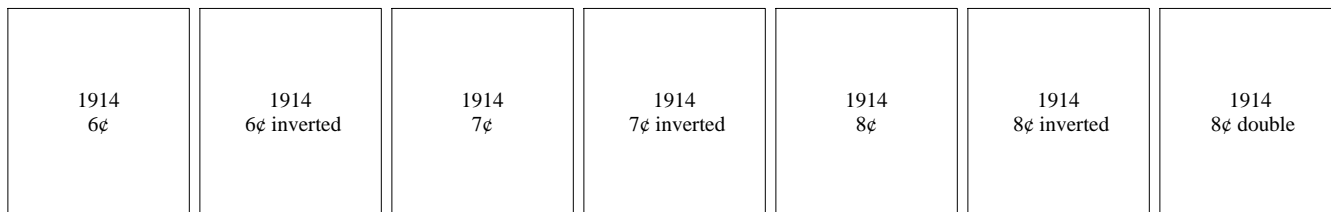
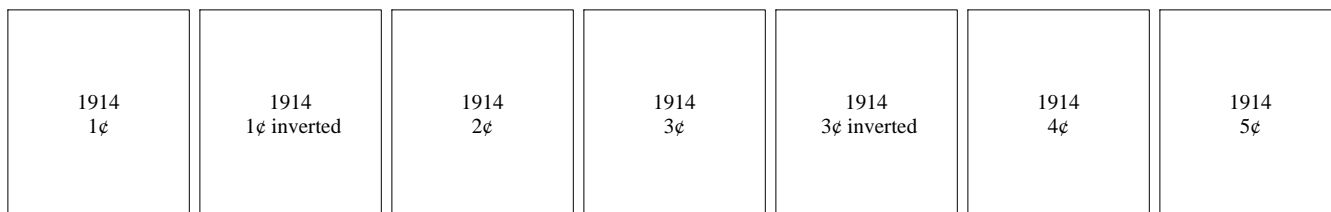
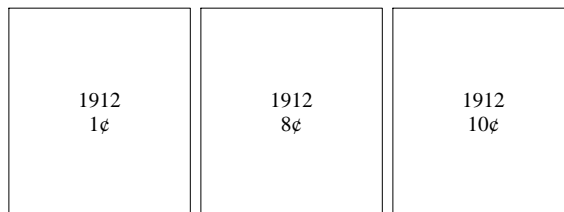
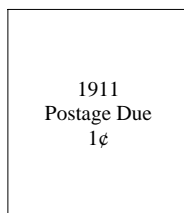
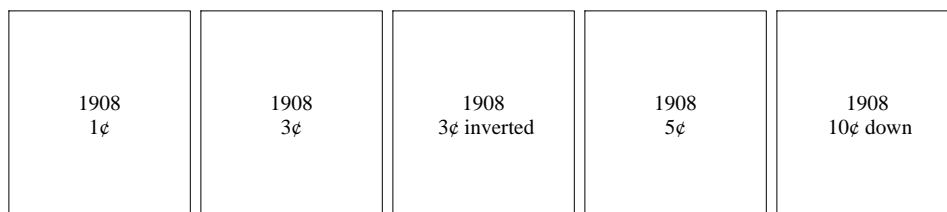
1920 pf 10x11
Rotary
1¢ inverted

1921 pf 10x10
Rotary
1¢

1922 Perf
11x11 Rotary
1¢ Scott 544

Virginia

Roanoke - Type 204



Virginia

Roanoke - Type 204

1914
Postage Due
1¢

1914
Postage Due
2¢

1917
1¢

1917
1¢ inverted

1917
2¢

1917
2¢ blue ink

1917
2¢ inverted

1917
2¢ double

1917
3¢

1917
3¢ double

1917
4c

1917
4¢ double

1917
5¢

1917
5¢ inverted

1917
5¢ blue ink

1917
6¢

1917
7c

1917
7¢ blue ink

1917
8¢

1917
8¢ blue ink

1917
10¢

1917
10¢ blue ink

1917
11¢

1917
12¢

1917
13¢

1917
20¢

1917
30¢

1917
50¢

1917
Postage Due
1¢

1917
Postage Due
1¢ inverted

1917
Postage Due
2¢

1917
Postage Due
2¢ inverted

Virginia

Roanoke - Type 204

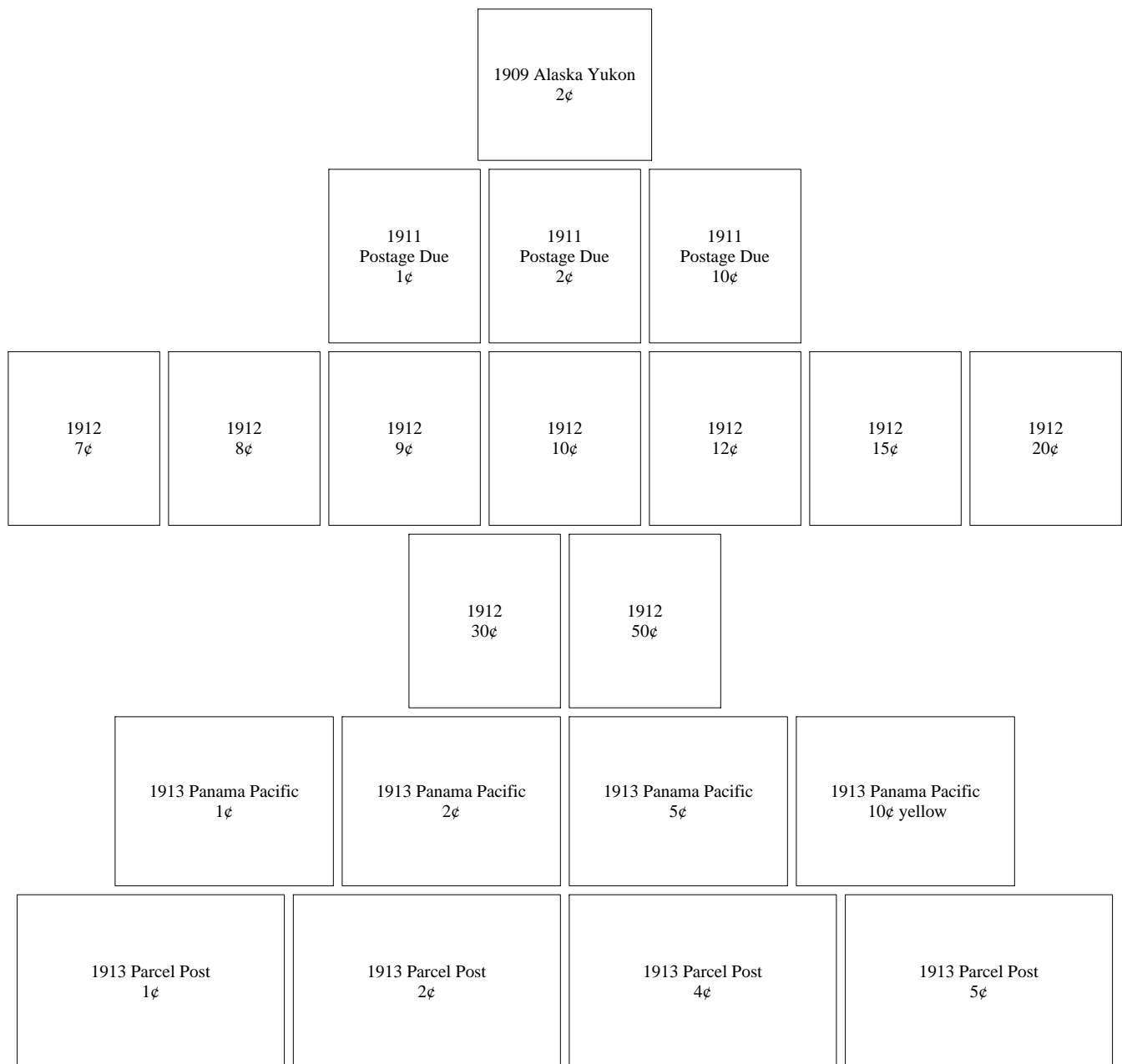
1918 Offset 2¢	1918 Offset 2¢ blue ink	1918 Offset 3¢
1920 pf 10x11 Rotary 1¢	1920 pf 10x11 Rotary 1¢ blue ink	
1921 pf 10x10 Rotary 1¢	1921 pf 10x10 Rotary 1¢ double	

Roanoke - Type 415

1908 1¢	1908 1¢ booklet single	1908 2¢	1908 3¢	1908 4¢	1908 5¢	1908 6¢
		1908 8¢	1908 10¢	1908 15¢		

Virginia

Roanoke - Type 415



Virginia

Roanoke - Type 415

1913 Parcel Post
10¢

1913 Parcel Post
20¢

1913 Parcel Post
25¢

1913 Parcel Post Postage Due
1¢

1913 Parcel Post Postage Due
2¢

1913 Parcel Post Postage Due
5¢

1913 Parcel Post Postage Due
10¢

1913 Parcel Post Postage Due
25¢

1914
1¢

1914
1¢ booklet single

1914
2¢

1914
3¢

1914
4¢

1914
5¢

1914
6¢

1914
7¢

1914
8¢

1914
9¢

1914
10¢

1914
12¢

1914
15¢

1914
20¢

1914
Postage Due
2¢

1914
Postage Due
3¢

1914
Postage Due
5¢

1914
Postage Due
10¢

Virginia

Roanoke - Type 415

1915 Panama Pacific
1¢

1915 Panama Pacific
2¢

1915 Panama Pacific
5¢

1915 Panama Pacific
10¢

1916 Coil Perf
10 Vert
1¢

1916 Coil Perf
10 Vert
2¢

1917
6¢

1917
Postage Due
2¢

1921 pf 10x10
Rotary
1¢

Virginia

Shawsville - Type 482

1917 Postage Due 1¢	1917 Postage Due 2¢
---------------------------	---------------------------

South Boston - Type 486

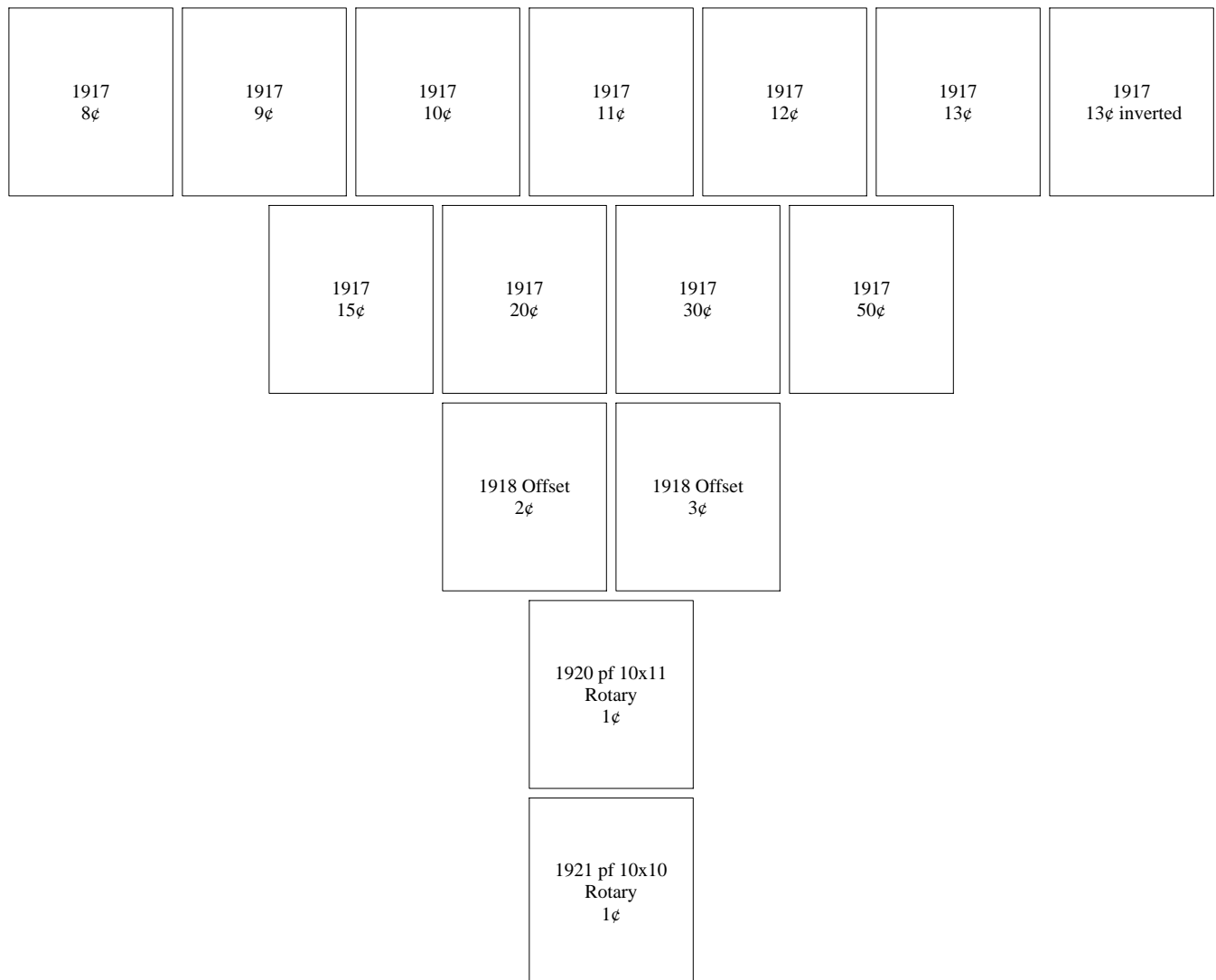
1917 Postage Due $\frac{1}{2}$ ¢	1917 Postage Due 1¢	1917 Postage Due 2¢	1917 Postage Due 5¢	1917 Postage Due 10¢
--	---------------------------	---------------------------	---------------------------	----------------------------

Suffolk - Type 204

1917 1¢	1917 2¢	1917 3¢	1917 4¢	1917 5¢	1917 6¢	1917 7¢
------------	------------	------------	------------	------------	------------	------------

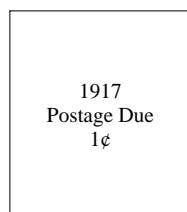
Virginia

Suffolk - Type 204

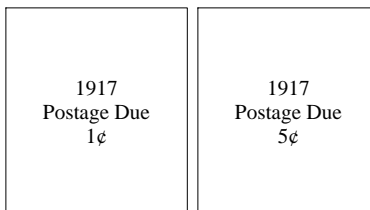


Virginia

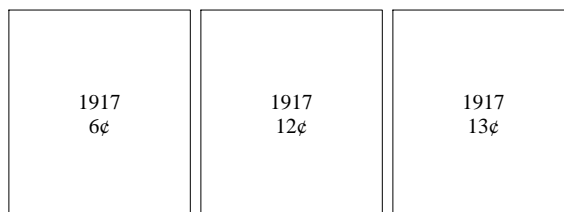
Sweet Briar - Type 713



Virginia Beach - Type 486



Woodstock - Type 471



Virginia

Woodstock - Type 471

1917 Postage Due ½¢	1917 Postage Due 1¢	1917 Postage Due 2¢	1917 Postage Due 5¢	1917 Postage Due 10¢
---------------------------	---------------------------	---------------------------	---------------------------	----------------------------

Wytheville - Type 471

1916 Coil Perf 10 Vert 10¢	
1917 Postage Due 1¢	1917 Postage Due 2¢